

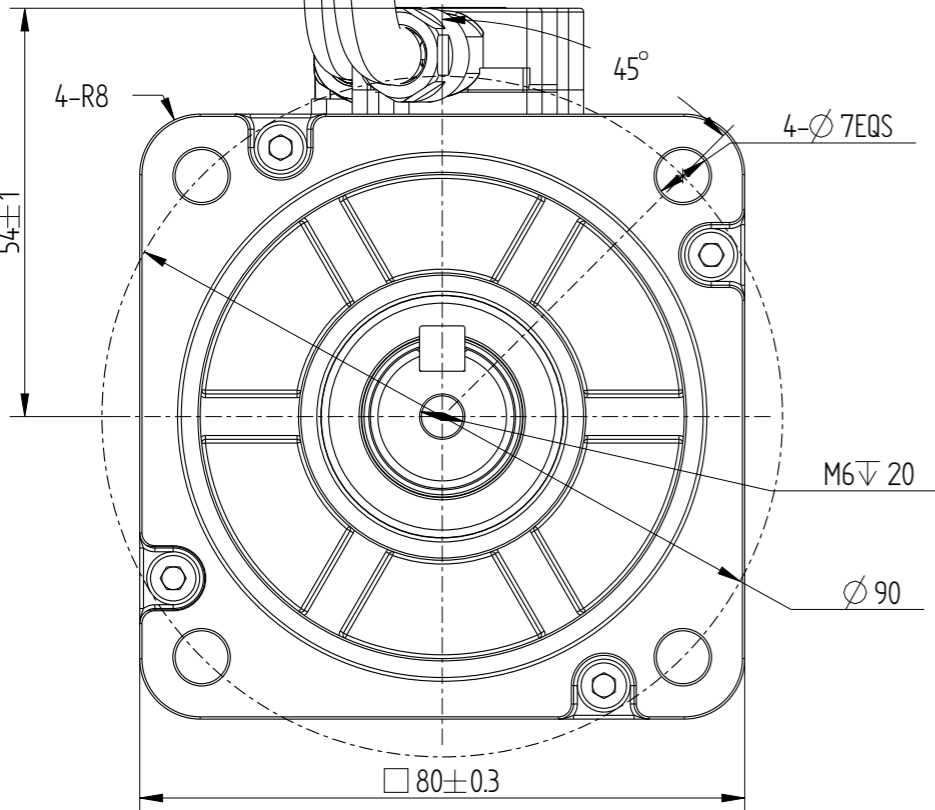
Copyright:Copyright infingmengt reserved

INOVANCE

A
B
C
D
E
F
A3

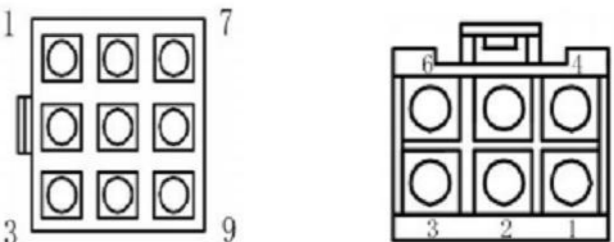
Amendment	Description

Unit: Millimeter (mm)



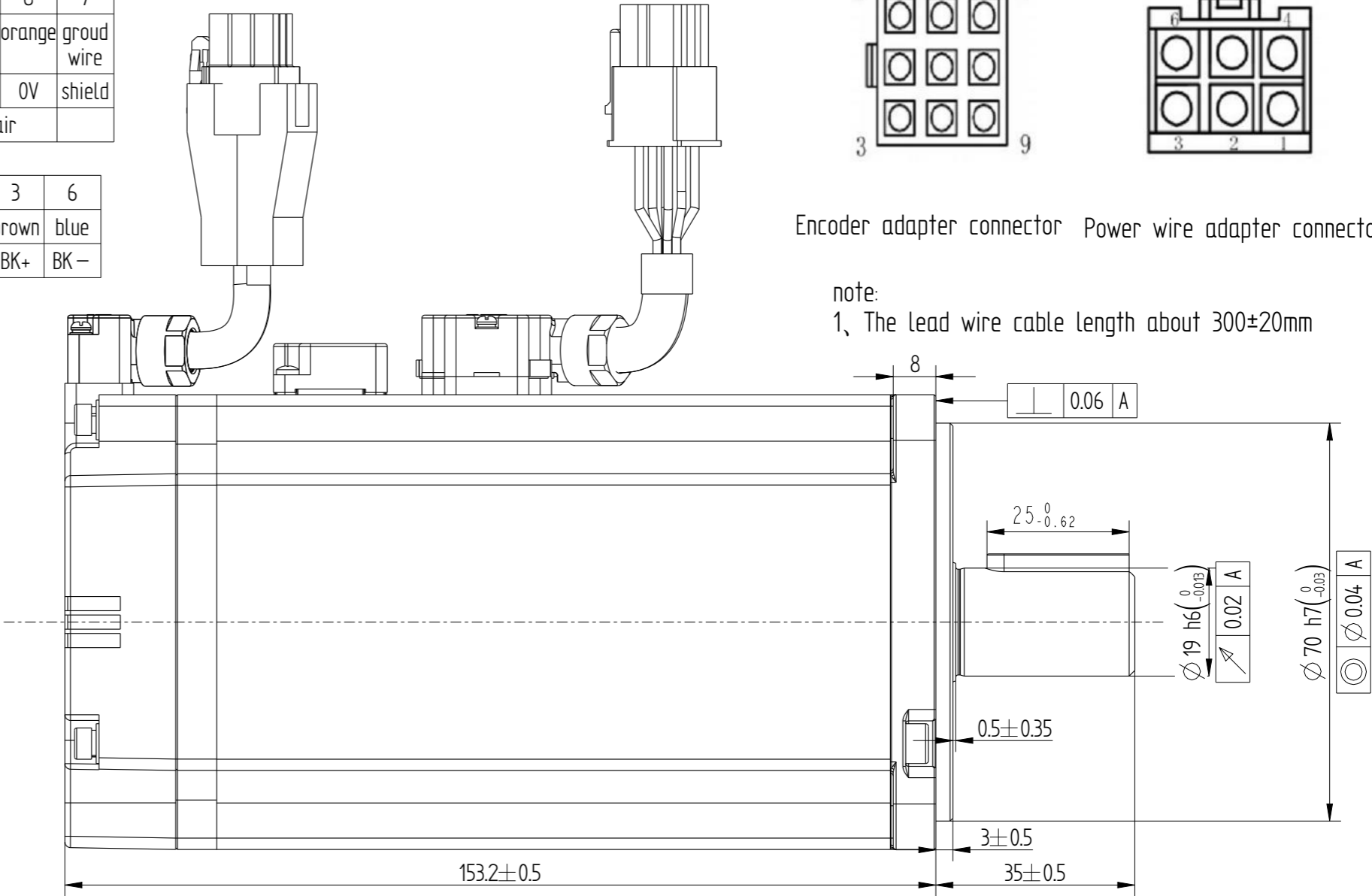
Encoder adapter connector							
9pin terminal	3	6	1	4	9	8	7
Core color	blue	purple	brown	black	red	orange	groud wire
definition	PS+	PS—	DC+	DC—	+5V	0V	shield
	Pair		Pair		Pair		

Power wire adapter connector						
6pin terminal	5	4	2	1	3	6
Core color	chartreuse	red	black	white	brown	blue
definition	PE	W	V	U	BK+	BK—

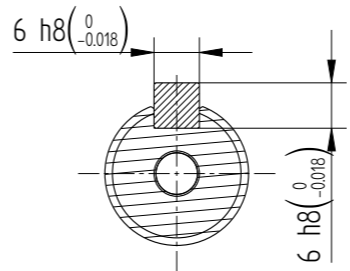
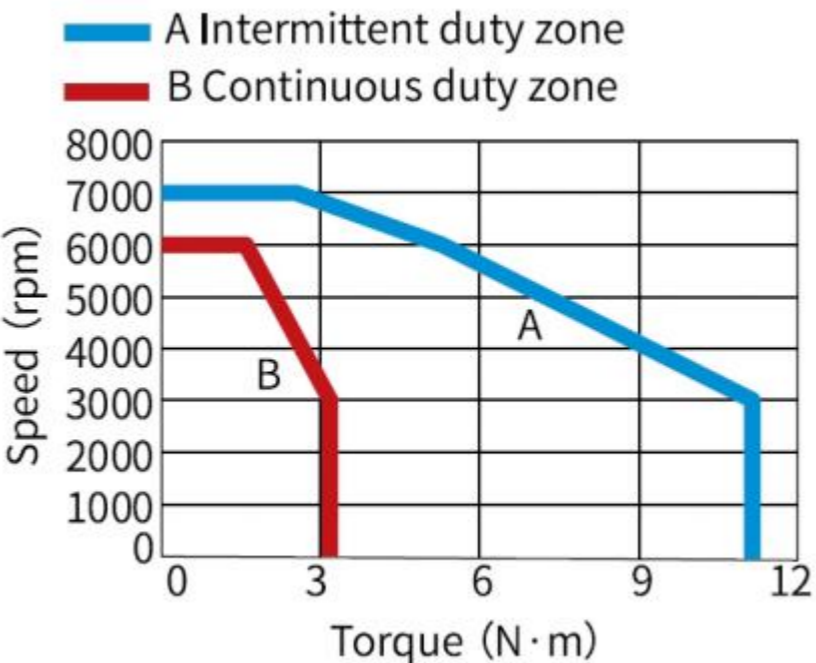


Encoder adapter connector Power wire adapter connector

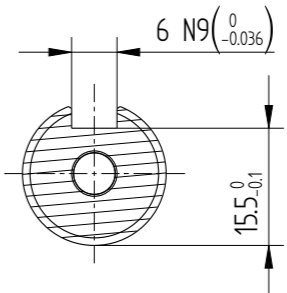
note:
1、The lead wire cable length about 300±20mm



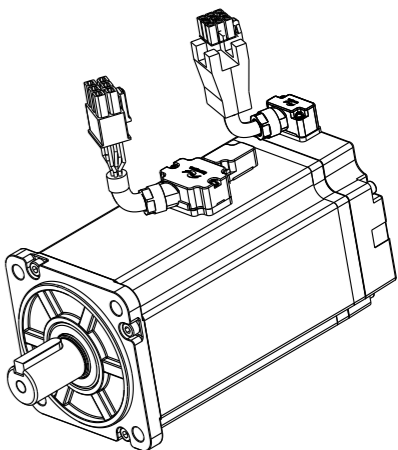
Basic function parameters	
Rated power kW	1
Rated voltage V	220
Rated current A	6.5
Peak current at rated speed A	24
Rated torque Nm	3.18
Peak torque at rated speed Nm	11.13
Rated speed rpm	3000
Max speed rpm	7000
Rotor inertia kg·cm ²	1.97±10%
Encoder resolution	23bit
Insulation class	F(155)
Protection class	IP67
Static torque of brake Nm	≥3.2
Brake power supply V	DC24±10%
Brake backlash°	≤1
Duty cycle	S1
Radial load N	≤392
Axial load N	≤147




Dimension of shaft end with key



Dimension of shaft end



				Motor Outline Drawing			0111A180-WX	
B01	Replace	/	/					
Version	Change method	Changed by	Date					
Design	/			/			Mark	
Check	/							
Craft	/							
Verify	/							
Standardization	/			Weight	Scale	Version	Page 1 of 1	
Approve	/			2.9kg	12	B01	Model	MS1H4-10C30CB-A334R-S-INT

